

CUSTOMER

# CAN ART STANDARD

DIE No.

EH05930

REV. No.

1

DESCRIPTION

5.000" x 0.188" THK. SQ. TUBE

CUSTOMER PART No.

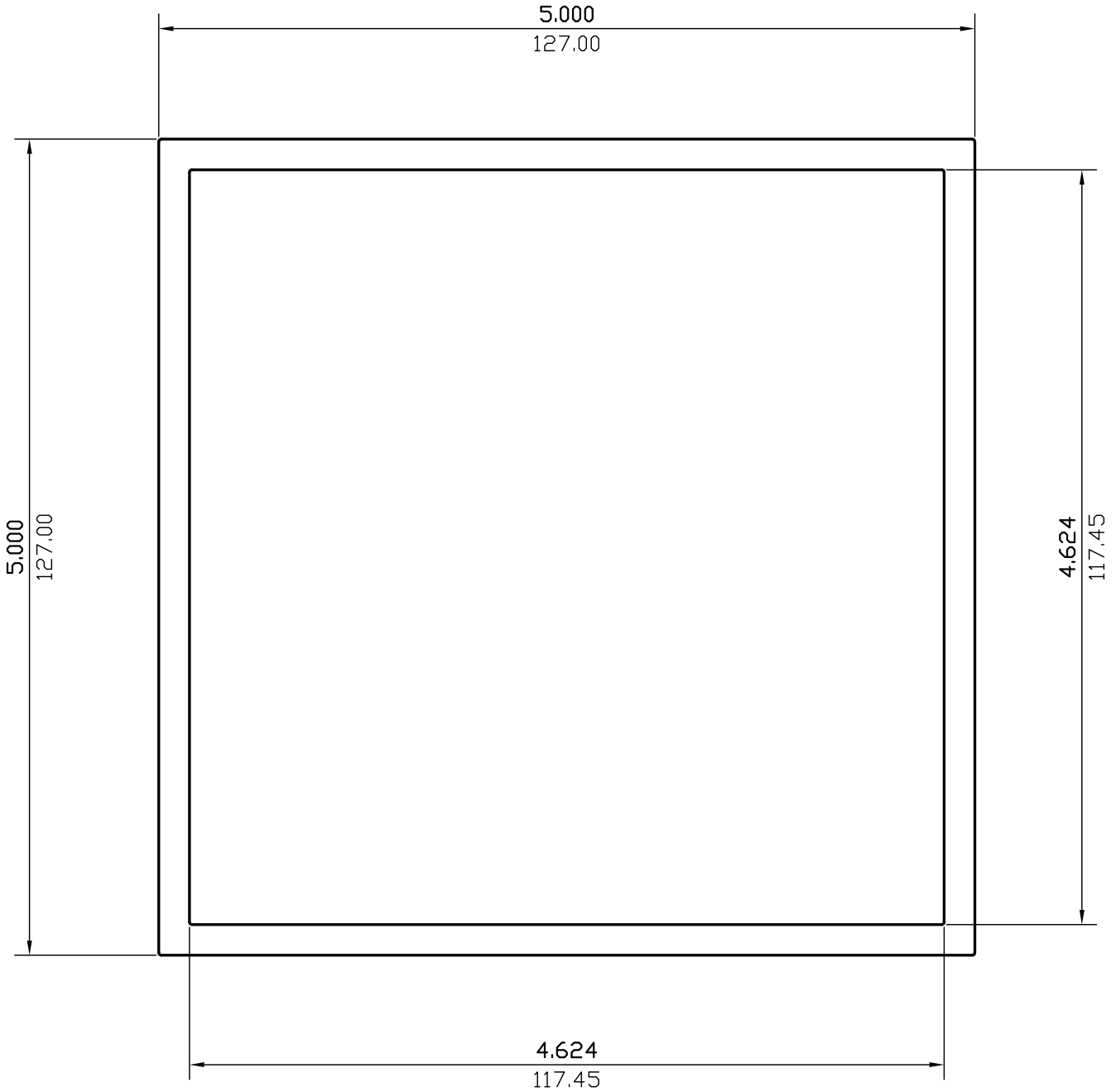
QUOTE No.

L09-0055-4

PROPOSAL No.

H-57221

NOTE: BREAK ALL CORNERS WITH 0.015" (.38 MM) RADIUS UNLESS OTHERWISE NOTED. STANDARD TOLERANCES TO APPLY UNLESS OTHERWISE SPECIFIED.



WALL THICKNESS 0.188 (4.78) EXCEPT AS SHOWN

DATE	REV	DESCRIPTION	BY					
03/13/23	1	REMOVED ALLOY	JASON					
EST.AREA	3.619	IN. <sup>2</sup>	EST.AREA	2334.610	MM. <sup>2</sup>			
EST.WT.	4.342	LBS/FT.	EST.WT.	6.462	KG/M.			
EST.PER.	38.444	IN.	EST.PER.	976.490	MM.			
OUT PER.	19.974	IN.	OUT PER.	507.3	MM.			
C.C.D.	7.059	IN.	C.C.D.	179.289	MM.			
FINISH	M/F		ALLOY					
CKD BY	FACTOR	9	SCALE	1:1	DWN BY	J.T.	DATE	03/20/2009

## CAN ART

ALUMINUM EXTRUSION INC.

428 JUTRAS DRIVE S.  
WINDSOR, ON N8N 5C5  
TEL. NO. (519) 727-4399  
FAX NO. (519) 727-6434  
WEB: www.canart.com

THIS DRAWING IS NOT NECESSARILY A COPY OF YOUR ORIGINAL. PLEASE APPROVE DIMENSIONS AND TOLERANCES INDICATED. CAN ART ASSUMES NO RESPONSIBILITY EITHER TECHNICAL OR LEGAL FOR HAVING THIS SHAPE MADE. THE CUSTOMER AGREES TO FULLY PROTECT CAN ART ALUMINUM FROM CLAIMS OF OTHERS RESULTING FROM THIS SHAPE.

SIGNED: \_\_\_\_\_ DATE: \_\_\_\_\_